

MRSASelect™ II

Selective Chromogenic Medium to Improve Efficiency in the MRSA Screening



MRSASelect™ II

Enhanced fertility and sensitivity to promote the growth of MRSA as bigger colonies within 18 hours

Easy to Interpretate

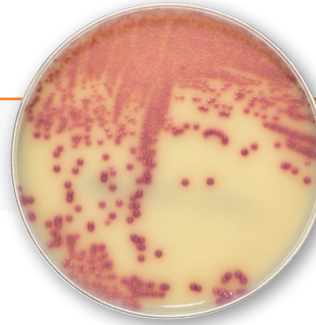
- **Colorful** colonies **within 18 hours**
- Distinctive **large pink** colonies enhanced by an **opaque agar**



MRSASelect™ II

Easy to Use

- Results from 18 hours
- No additional confirmation



S. aureus
ATCC® 43300
at 18 hrs™

Enhanced Performances

Clinical study performed on 154 specimens, including 50 positive strains (anterior nares, rectal swabs, skin and soft-tissue wound specimens) to compare the sensitivity and the specificity of both **MRSASelect™ II** and **MRSASelect™** media. Results were confirmed by latex for *S. aureus* identification (Pastorex™ Staph Plus) and PBP2a detection after induction with cefoxitin disk.

Results at 18 and 24 hours incubation times

Reading time	18 hours		24 hours	
	MRSASelect™	MRSASelect™ II	MRSASelect™	MRSASelect™ II
N = 154				
Sensitivity	98.7%	100%	99.3%	100%
Specificity	100%	100%	100%	100%

Ordering Information

Catalog No.	Description	
63757	MRSASelect™ II	20 plates Ø 90 mm
63759	MRSASelect™ II	100 plates Ø 90 mm

Related products

63748	SaSelect™	20 plates Ø 90 mm
56356	Pastorex™ Staph Plus	50 tests
56353	Pastorex™ Staph Plus	250 tests



**Bio-Rad
Laboratories**

For further information, please contact the Bio-Rad office nearest you or visit our website at www.bio-rad.com/diagnostics

Clinical
Diagnostics Group

Website www.bio-rad.com/diagnostics **Australia** 61-2-9914-2800 **Austria** 43-1-877-8901 **Belgium** +32 (3)710-53-00 **Brazil** +55 (31)3689-6600 **Canada** 1-514-334-4372 **China** 86-21-61698500 **Czech Republic** 420-241-430-532 **Denmark** +45-4452-1000 **Finland** 358-9-804-22-00 **France** 33-1-47-95-60-00 **Germany** +49 (0)89-318-840 **Greece** 30-210-7774396 **Hong Kong** 852-2789-3300 **Hungary** +36-1-459-6100 **India** 1800-180-1224 **Israel** 972-3-9636050 **Italy** +39-02-216091 **Japan** 81-3-6361-7070 **Korea** 82-2-3473-4460 **Mexico** +52 (55) 5488-7670 **The Netherlands** +31-318-540666 **New Zealand** 64-9-415-2280 **Norway** +47-23-38-41-30 **Poland** 48-22-3319999 **Portugal** 351-21-472-7700 **Russia** 7-495-721-14-04 **Singapore** 65-6415-3170 **South Africa** 27-11-442-85-08 **Spain** 34-91-590-5200 **Sweden** 46-8-555-127-00 **Switzerland** +41 (0)26-674-55-05/06 **Taiwan** 886-2-2578-7189 **Thailand** 662-651-8311 **United Kingdom** +44 (0)20-8328-2000

